

# TRAILER T-677 EU

TECHNICAL SPECIFICATIONS | EQUIPMENT



 **HOMOLOGATION  
EUROPEAN**



**WARRANTY**  
24 months



**WARRANTY**  
48 months  
on galvanized parts

Year of model 2022

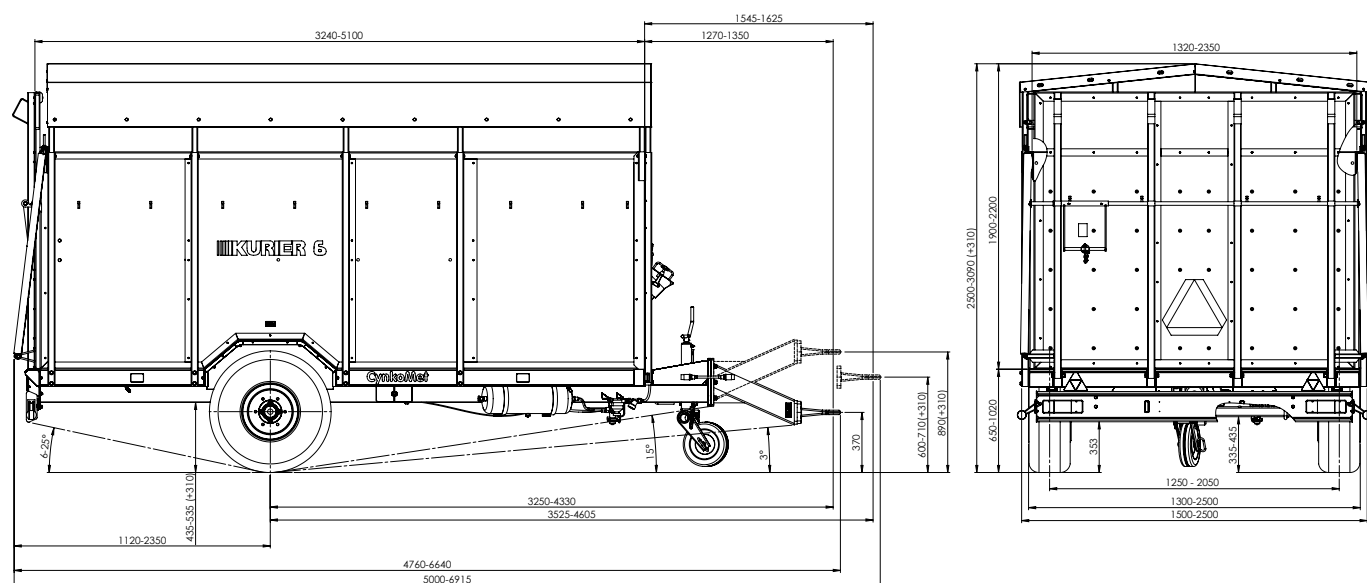
version.1.2022

**CynkoMet®**  
Czarna Białostocka

# TECHNICAL SPECIFICATIONS

Type/Variant/Version	T-3 / 410 / 112
Load capacity	~3,430 kg*
Unladen mass	~1,760 kg*
Gross vehicle weight rating	5,860 kg
including on axles max.	4,860 kg
including on drawbar max.	1,000 kg
Length	5,739 mm
Width	2,42w0 mm
Height	~2,800 mm
Cargo box dimensions (length x width x height)	4,160 x 2,230 x 1,500 mm
Loading surface	9.3 m <sup>2</sup>
Height of floor above ground	~710 mm
Floor thickness	30mm wood floor
Tire size	11.5/80-15.3
Track of wheels	2,000 mm
Drawbar coupling height - bottom position	410 mm
Drawbar coupling height - top position	830 mm
Max. tolerable vertical load on drawbar	1,000 kg
Max. tolerable load on driving axle	4,200 kg
Transport/working speed	30 km/h (40 km/h version with overrun brake)
Suspension	rigid axle
Class of cooperating tractor	60 HP

\* - unladen weight and loading capacity may differ depending on the trailer's equipment



<b>STANDARD MACHINE EQUIPMENT</b>
New 11.5/80-15.3 wheels
Walls - water-resistant plywood with film coating on both sides
Axles from the renowned ADR company, homologated (EU 2015/68), bar cross-section - square 70, brake size 300x60 306E, 6 M18x1.5 pins
Impregnated wood floor
Hot-dip galvanized bottom frame (protection of the structure on the exterior and interior of profiles), stringers of the frame made of C120 channel section
Rigid drawbar for coupling with the top or bottom hitch of the tractor, with replaceable 50mm eye, drawbar homologated according to Directive EU 2015/208, 40mm eye
Two wheel chocks placed in galvanized pockets
12V lighting, homologated, rear bulb lamps, LED perimeter lighting
Lighting installation connector cable with 7PIN 12V plug
Homologated, double-circuit, pneumatic brake system with manual braking force adjustment from HALDEX
Parking handbrake with crank
Springs to facilitate the opening of the rear wall
Unfolding side barriers, hot-dip galvanized
Hot-dip galvanized frame for tarpaulin
Straight drawbar support with collapsible steel wheel, partially hot-galvanized

*All of our agricultural machines are designed and tested by our design team using the latest available tools.  
Manufacturing is performed with the greatest diligence and in adherence to rigorous quality standards.*

## OPTIONAL MACHINE EQUIPMENT

### Structural elements

Interior partition

4 mm aluminum floor

Side door

Watertight anti-slip plastic tub (polyurea)

Coating of rear ramp with anti-skid polyurea

Hot-galvanized sheet walls

### Installations

Full LED lighting

Overrun brake (homologation up to 40 km/h)

### Driving system

Surcharge for 400/60 - 15.5 wheels

400/60-15.5 spare wheel

11.5/80-15.3 spare wheel

### Other equipment

Laced tarpaulin

Drain with ball valve

Warning triangle

Drawbar eye 50mm



The data and photographs given in the catalog are for illustrative purposes only. This document and the information it contains, including prices, do not constitute a commercial offer within the meaning of art. 66 of the Civil Code. This information may be subject to change as products are continuously improved. The manufacturer reserves the right to change a product's characteristics at any time. Products' specifications may change without notice.



**HOT-  
GALVANIZED CONSTRUCTION**